



Search Criteria

Site 3748

Disclaimer

Aboriginal sites exist that are not recorded on the Register of Aboriginal Sites, and some registered sites may no longer exist. Consultation with Aboriginal communities is on-going to identify additional sites. The AHA protects all Aboriginal sites in Western Australia whether or not they are registered.

Copyright

Copyright in the information contained herein is and shall remain the property of the State of Western Australia. All rights reserved. This includes, but is not limited to, information from the Register of Aboriginal Sites established and maintained under the Aboriginal Heritage Act 1972 (AHA).

Legend

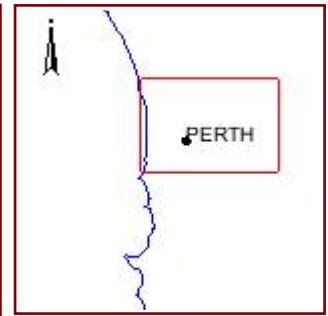
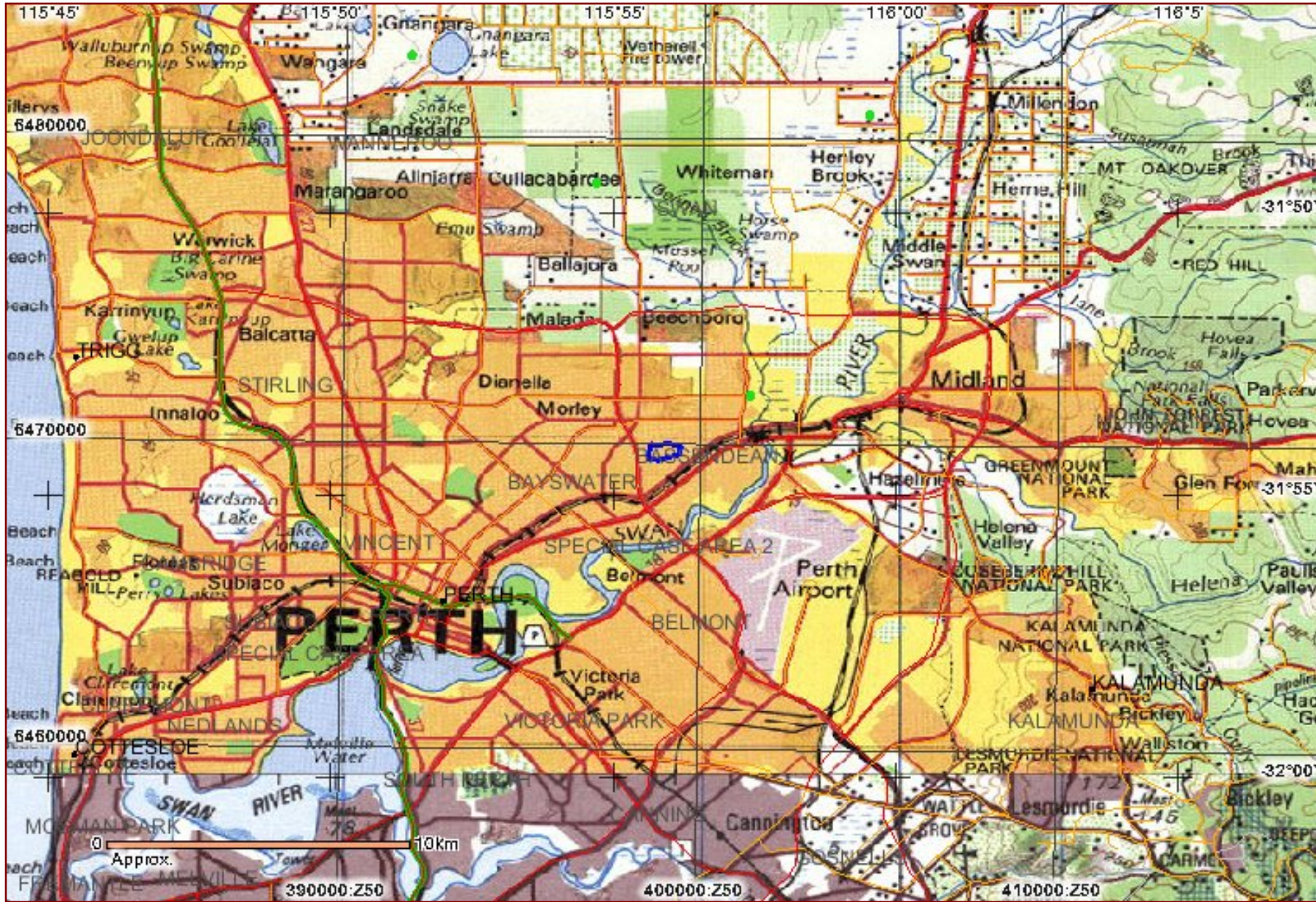
Restriction		Access		Status		Coordinate Accuracy	
N	No restriction	C	Closed	I	Interim register	Accuracy is shown as a code in brackets following the site coordinates.	
M	Male access only	O	Open	P	Permanent register	[Reliable]	The spatial information recorded in the site file is deemed to be reliable, due to methods of capture.
F	Female access	V	Vulnerable	S	Stored data	[Unreliable]	The spatial information recorded in the site file is deemed to be unreliable due to errors of spatial data capture and/or quality of spatial information reported.

Spatial Accuracy

Index coordinates are indicative locations and may not necessarily represent the centre of sites, especially for sites with an access code "closed" or "vulnerable". Map coordinates (Lat/Long) and (Easting/Northing) are based on the GDA 94 datum. The Easting / Northing map grid can be across one or more zones. The zone is indicated for each Easting on the map, i.e. '5000000:Z50' means Easting=5000000, Zone=50.



Site ID	Status	Access	Restriction	Site Name	Site Type	Additional Info	Informants	Coordinates	Site No.
3748	S	O	N	Nyibra Swamp.		Hunting Place	*Registered Informant names available from DIA.	399010mE 6469736mN Zone 50 [Unreliable]	S02198



Legend

- Highlighted Area
- Town
- Map Area
- Search Area

Copyright for base map information shall at all times remain the property of the Commonwealth of Australia, Geoscience Australia - National Mapping Division. All rights reserved.

Copyright for Native Title Land Claim, Local Government Authority, Mining Tenement boundaries shall at all times remain the property of the State of Western Australia. All rights reserved.

For further important information on using this information please see the Department of Indigenous Affairs' Terms of Use statement at <http://www.dia.wa.gov.au/terms.aspx>